

At day's end, retire in style to Grizzly's spacious bedroom with mirror accent and ample closet storage. Climb into the queen bed to relax, watch TV or drift to sleep listening to your favorite tunes on the 100-watt per channel surround sound system. Super deep tint windows mean maximum privacy.

Typical Floorplan:
(Custom plans available.)



Cab & Equipment:

- Adjustable Steering Column, Telescoping Tilt
- Center console
- CB radio: Cobra 29LTDWX with weather
- 42" Motorhome including 32' of living space
- 8' ceilings
- 13" glide out on roadside
- Day/night shades
- Power sofa
- Power captain drivers' seat
- Dinette
- All-leather seating
- Queen-size bed
- Solid oak cabinetry
- Corian counter top
- 10-cubic-foot 3-way side by side refrigerator/freezer with icemaker
- 1-cubic-foot microwave
- 4 burner gas stove with oven
- China toilet
- 100-gallon fresh water supply
- Unlimited hot water supply
- Two 46-gallon holding tanks
- Hot-water system furnace with diesel fired boiler
- Central air
- Cellular phone installation kit
- Sony back-up camera
- 10,000 watt diesel generator

- with auto start
- Outside shower
- Wet bar with icemaker
- Extra large propane supply
- Built-in safe
- Awnings on all windows
- Super deep tint windows
- Two pocket doors
- Corner tub/shower
- 40,000 lb. hitch
- Washer/dryer combination
- Soffit lighting
- All exterior baggage door featuring piston supports
- Electric steps
- 30" entrance door
- Window lift: Electric-powered RH/LH
- Spotlight: RH/LH—Mounted Halogen
- 5/8" Fiberglass Reinforced Plywood for durability

Audio/Video Systems

- 100 watt per channel surround sound system with subwoofer
- One 20" color TV with VCP & one 27" color TV with VCR
- Power antenna
- Satellite Sony DSS system/receiver with auto-tuning
- Sony High Fidelity VHS VCR
- Alpine AM/FM Stereo CD player

- Exterior Sony AM/FM stereo CD player with speakers

Body:

- Length 30 ft.; Height 13 ft.
- Max Laden Weight (lbs): 46,000

Engine:

- 3406E 50ST Caterpillar
- 475 HP at 1,800 RPM
- 1,650 ft pounds torque at 1,200 RPM
- Retarder: Jacobs 3406E engine brake
- 5 year - 500,000 mile, CAT extended service, -D- deductible engine warranty
- Fuel tank heaters: Arctic Fox - 1 in each of 2 tanks
- Alternator: Leece Neville 160 AMP

Transmission:

- Eaton-Fuller RTA 016 710 BAC 10-speed transmission
- Auto-select: use clutch only to start and stop, shifts automatically
- 5 year - 750,000 mile Eaton extended warranty
- Eaton-Fuller transmission oil cooler
- Synthetic lube; Manual Transmission & Axles

Rear:

- Eaton DS 404 - 40,000 dual rear
- KW airglide 200 - 8-bag air ride
- Wabco ABS
- Synthetic lube
- Rear axle ratio: 3.36
- Auto slack adjusters: Gunite Auto Dual
- 3-year unlimited mileage warranty

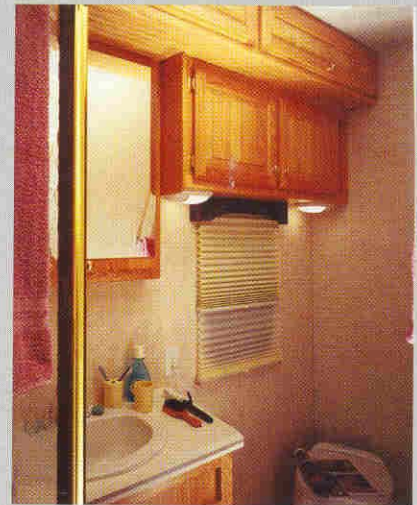
Chassis:

- Front Axle Load (lbs): 12,000
- Rear Axle Load (lbs): 34,000
- G.C.W. (lbs): 46,000
- Maximum Grade: 6%

Road Conditions:

- Class A (Highway) 100%
- Class B (Hwy/Mtn) 0%
- Class C (Off-Hwy) 0%
- Class D (Off-Road) 0%
- Wheelbase (in): 320
- Front Axle to BOC (in): 74
- Cab to Axle (in): 246
- Cab to EOF (in): 366

Due to product improvements, specifications are subject to change without notice.



Every Grizzly offers living space designed with your absolute comfort in mind. Grizzly's full bath features a china toilet and full-size corner tub/shower combination. A 100-gallon fresh water supply and two 46-gallon holding tanks mean unlimited comfort and convenience. Pocket doors create a private dressing area.

Your home away from home comes equipped with high performance laundry facilities. An all-in-one washer/dryer combination and unlimited hot and cold water make trips to the laundromat a thing of the past.



Cowboy Cadillac.com
Call (800) 214-6905

